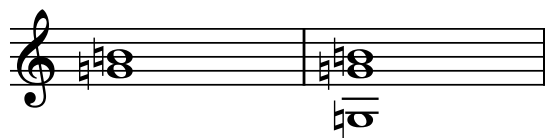


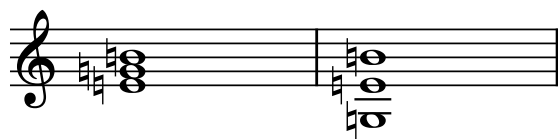
1.

G sans tierce majeure



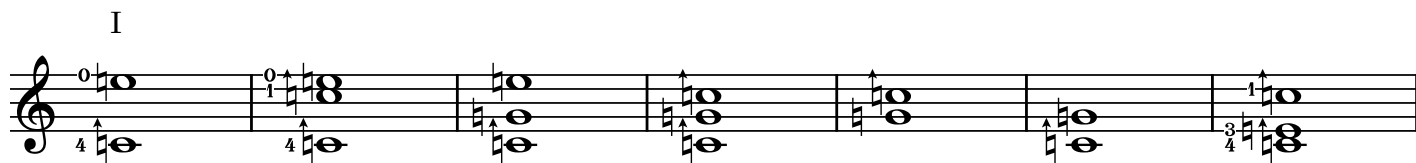
2.

E sans tierce mineure



3.

C sans quinte



4.

Tierces majeures

I                      I                      I                      II                      I

I                      I                      I                      I                      I

5.

A+

6.

A+ → F#

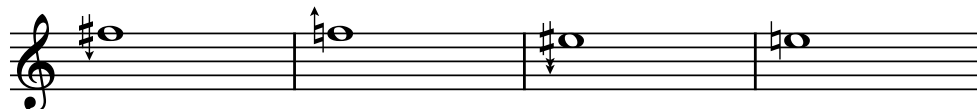
7.

Tierce mineure



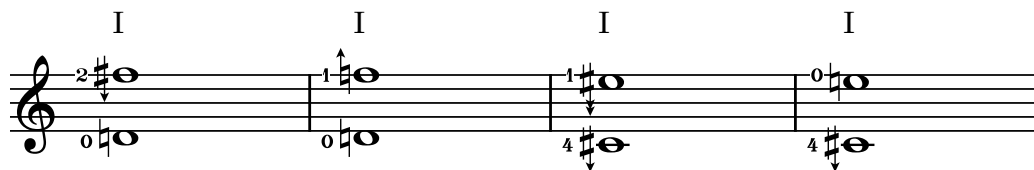
8.

F# → F → E# → E



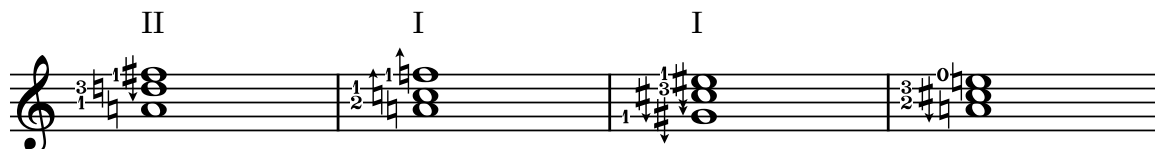
9.

D → Dm → C# → C#m



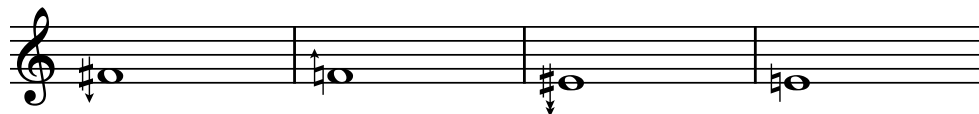
10.

D → F → C# → A



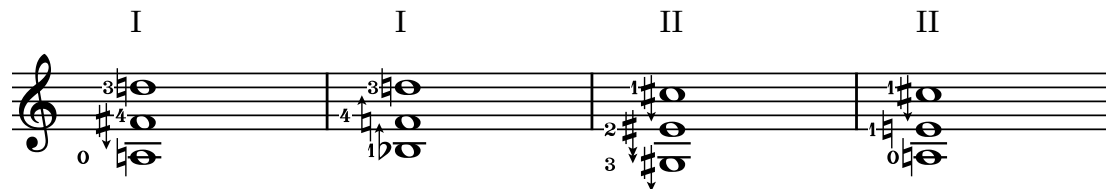
11.

F# → F → E# → E



12.

D → Bb → C# → A



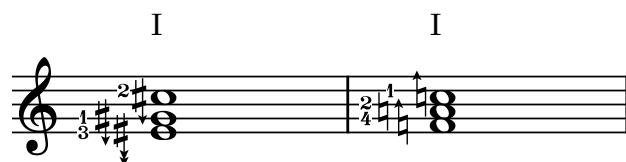
13.

125:128



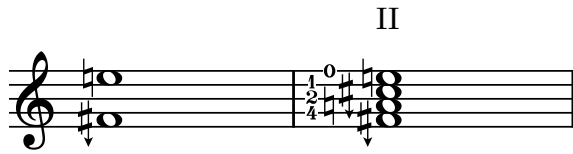
14.

773c\_\*25/16\_C#→F



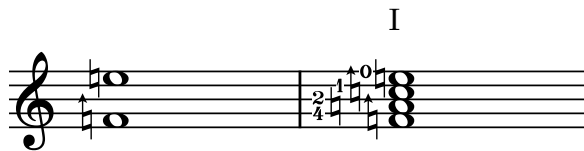
15.

F#m7



16.

Fm7



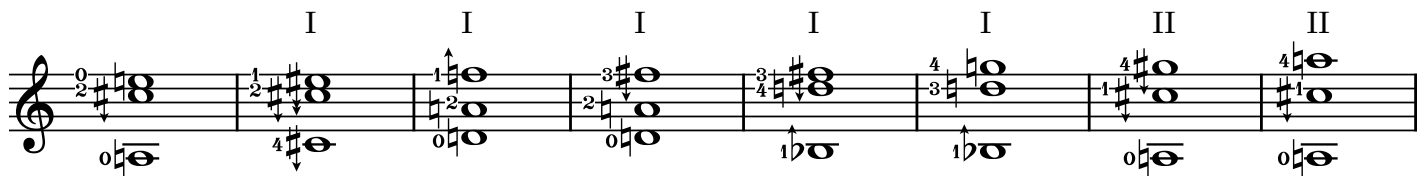
17.

E → E# → F → F# → G → G# → A



18.

A → C# → D → Bb → Gm → A



19.

E#dim

I

Musical notation for exercise 19, E#dim chord. The notation is on a single staff in treble clef. It consists of six measures. The first measure has a treble clef, a key signature of one sharp (F#), and a 3/8 time signature. The notes are E#4, G#4, and B4. The second measure has a whole rest on the treble clef and a bass clef with a whole note E#1. The third measure has a treble clef, a key signature of one sharp, and a 3/8 time signature. The notes are E#4, G#4, and B4. The fourth measure has a whole rest on the treble clef and a bass clef with a whole note E#1. The fifth measure has a treble clef, a key signature of one sharp, and a 3/8 time signature. The notes are E#4, G#4, and B4. The sixth measure has a whole rest on the treble clef and a bass clef with a whole note E#1. Fingering numbers 1, 2, and 3 are shown for the treble clef notes, and 0 and 1 are shown for the bass clef notes.

20.

E#dim → F#m

I II

Musical notation for exercise 20, E#dim to F#m transition. The notation is on a single staff in treble clef. It consists of two measures. The first measure has a treble clef, a key signature of one sharp (F#), and a 3/8 time signature. The notes are E#4, G#4, and B4. The second measure has a treble clef, a key signature of one sharp, and a 3/8 time signature. The notes are F#4, A4, and C#5. Fingering numbers 1, 2, and 3 are shown for the first measure, and 1 and 3 are shown for the second measure.

21.

F#dim

I

Musical notation for exercise 21, F#dim chord. The notation is on a single staff in treble clef. It consists of six measures. The first measure has a treble clef, a key signature of one sharp (F#), and a 2/4 time signature. The notes are F#4, A4, and C#5. The second measure has a treble clef, a key signature of one sharp, and a 2/4 time signature. The notes are F#4, A4, and C#5. The third measure has a treble clef, a key signature of one sharp, and a 2/4 time signature. The notes are F#4, A4, and C#5. The fourth measure has a treble clef, a key signature of one sharp, and a 2/4 time signature. The notes are F#4, A4, and C#5. The fifth measure has a treble clef, a key signature of one sharp, and a 2/4 time signature. The notes are F#4, A4, and C#5. The sixth measure has a treble clef, a key signature of one sharp, and a 2/4 time signature. The notes are F#4, A4, and C#5. Fingering numbers 1, 2, and 3 are shown for the first measure, and 1, 2, and 3 are shown for the other measures.

22.

F#dim → Bb

I I

Musical notation for exercise 22, F#dim to Bb transition. The notation is on a single staff in treble clef. It consists of two measures. The first measure has a treble clef, a key signature of one sharp (F#), and a 4/4 time signature. The notes are F#4, A4, and C#5. The second measure has a treble clef, a key signature of two flats (Bb), and a 4/4 time signature. The notes are Bb4, D5, and F5. Fingering numbers 1, 2, 3, and 4 are shown for the first measure, and 1, 2, 3, and 4 are shown for the second measure.

23.

A6, AM7, D9

Musical notation for exercise 23. The exercise consists of eight measures. Above the staff, the Roman numeral II is written above each measure. The notes are:
 

- Measure 1: Treble clef, 3/4 time signature, notes G4, A4, B4, C5.
- Measure 2: Treble clef, 1/4 time signature, notes G4, A4, B4.
- Measure 3: Treble clef, 3/4 time signature, notes G4, A4, B4, C5.
- Measure 4: Treble clef, 3/4 time signature, notes G4, A4, B4, C5.
- Measure 5: Treble clef, 1/4 time signature, notes G4, A4, B4.
- Measure 6: Treble clef, 3/4 time signature, notes G4, A4, B4, C5.
- Measure 7: Treble clef, 2/4 time signature, notes G4, A4, B4, C5.
- Measure 8: Treble clef, 1/4 time signature, notes G4, A4, B4.

 The bass line consists of a single note, G2, in the bass clef for all measures.

24.

0c\_\*1/1\_A→C#m

Musical notation for exercise 24. The exercise consists of six measures. Above the staff, the Roman numerals II, IV, II, II, VII, and VII are written above each measure. The notes are:
 

- Measure 1: Treble clef, 4/4 time signature, notes G4, A4, B4, C5.
- Measure 2: Treble clef, 1/2 time signature, notes G4, A4, B4, C5.
- Measure 3: Treble clef, 1/4 time signature, notes G4, A4, B4.
- Measure 4: Treble clef, 1/4 time signature, notes G4, A4, B4, C5.
- Measure 5: Treble clef, 3/4 time signature, notes G4, A4, B4, C5.
- Measure 6: Treble clef, 3/4 time signature, notes G4, A4, B4, C5.

 The bass line consists of a single note, G2, in the bass clef for all measures.

25.

71c\_\*25/24\_Am→F#m

Musical notation for exercise 25. The exercise consists of six measures. Above the staff, the Roman numerals II, II, II, II, V, and IV are written above each measure. The notes are:
 

- Measure 1: Treble clef, 2/4 time signature, notes G4, A4, B4, C5.
- Measure 2: Treble clef, 1/2 time signature, notes G4, A4, B4, C5.
- Measure 3: Treble clef, 1/4 time signature, notes G4, A4, B4, C5.
- Measure 4: Treble clef, 1/4 time signature, notes G4, A4, B4, C5.
- Measure 5: Treble clef, 2/4 time signature, notes G4, A4, B4, C5.
- Measure 6: Treble clef, 3/4 time signature, notes G4, A4, B4, C5.

 The bass line consists of a single note, G2, in the bass clef for all measures.

26.

112c\_\*16/15\_E→Am

Musical notation for exercise 26. The exercise consists of six measures. Above the staff, the Roman numerals VII, VII, VII, I, I, and I are written above each measure. The notes are:
 

- Measure 1: Treble clef, 1/3 time signature, notes G4, A4, B4, C5.
- Measure 2: Treble clef, 2/4 time signature, notes G4, A4, B4, C5.
- Measure 3: Treble clef, 3/4 time signature, notes G4, A4, B4, C5.
- Measure 4: Treble clef, 0 time signature, notes G4, A4, B4, C5.
- Measure 5: Treble clef, 0 time signature, notes G4, A4, B4, C5.
- Measure 6: Treble clef, 0 time signature, notes G4, A4, B4, C5.

 The bass line consists of a single note, G2, in the bass clef for all measures.

27.

182c\_\*10/9\_G#m→F#

I II

Musical notation for exercise 27. It shows two chords on a treble clef staff. The first chord, labeled 'I', is G#m (notes: G#, B, D) with a 4-finger fingering (0, 1, 4) and a downward arrow on the 4th string. The second chord, labeled 'II', is F# (notes: F#, A, C) with a 1-finger fingering (1, 2) and a downward arrow on the 1st string.

28.

275c\_\*75/64\_Am→G#

VII VI I I

Musical notation for exercise 28. It shows four chords on a treble clef staff. The first chord, labeled 'VII', is Am (notes: A, C, E) with a 3-finger fingering (3, 4, 1) and a downward arrow on the 3rd string. The second chord, labeled 'VI', is G# (notes: G#, B, D) with a 3-finger fingering (3, 4, 1) and a downward arrow on the 3rd string. The third chord, labeled 'I', is G# (notes: G#, B, D) with a 1-finger fingering (1, 2) and a downward arrow on the 1st string. The fourth chord, labeled 'I', is G# (notes: G#, B, D) with a 4-finger fingering (0, 4) and a downward arrow on the 4th string.

29.

316c\_\*6/5\_E#m→E

I I II I

Musical notation for exercise 29. It shows four chords on a treble clef staff. The first chord, labeled 'I', is E#m (notes: E#, G#, B) with a 1-finger fingering (1, 2, 3) and a downward arrow on the 1st string. The second chord, labeled 'I', is E#m (notes: E#, G#, B) with a 0-finger fingering (0, 1, 2) and a downward arrow on the 1st string. The third chord, labeled 'II', is E (notes: E, G, B) with a 2-finger fingering (2, 3) and a downward arrow on the 2nd string. The fourth chord, labeled 'I', is E (notes: E, G, B) with a 2-finger fingering (2, 0) and a downward arrow on the 2nd string.

30.

316c\_\*6/5\_D→Am

II II

Musical notation for exercise 30. It shows two chords on a treble clef staff. The first chord, labeled 'II', is D (notes: D, F, A) with a 3-finger fingering (3, 4, 1) and a downward arrow on the 3rd string. The second chord, labeled 'II', is D (notes: D, F, A) with a 1-finger fingering (1, 2) and a downward arrow on the 1st string.



31.

386c\_\*5/4\_Am→C#m

I II

32.

386c\_\*5/4\_Bb→F#m

III IV

33.

386c\_\*5/4\_A→C#

II III I I

34.

427c\_\*32/25\_C#→Am

I I III II VI VII

35.

427c\_\*32/25\_C#→F

Musical notation for exercise 35. It shows two chords on a treble clef staff. The first chord is labeled 'II' and consists of notes C#4, E4, G#4, and B4. The second chord is labeled 'IV' and consists of notes F4, A4, C5, and E5. Fingerings are indicated: for the first chord, index (1) on C#, middle (2) on E, ring (3) on G#, and pinky (4) on B; for the second chord, index (1) on F, middle (2) on A, ring (3) on C, and pinky (4) on E.

36.

498c\_\*4/3\_C#m→A

Musical notation for exercise 36. It shows two chords on a treble clef staff. Both are labeled 'II'. The first chord consists of notes C#4, E4, G#4, and B4. The second chord consists of notes A4, C5, E5, and G5. Fingerings are indicated: for the first chord, index (1) on C#, middle (2) on E, ring (3) on G#, and pinky (4) on B; for the second chord, index (1) on A, middle (2) on C, ring (3) on E, and pinky (4) on G.

37.

498c\_\*4/3\_C#→Dm

Musical notation for exercise 37. It shows two chords on a treble clef staff. Both are labeled 'I'. The first chord consists of notes C#4, E4, G#4, and B4. The second chord consists of notes D4, F4, A4, and B4. Fingerings are indicated: for the first chord, index (1) on C#, middle (2) on E, ring (3) on G#, and pinky (4) on B; for the second chord, index (1) on D, middle (2) on F, ring (3) on A, and pinky (4) on B.

38.

498c\_\*4/3\_Am→Bb

Musical notation for exercise 38. It shows four chords on a treble clef staff. The first two are labeled 'I' and consist of notes A4, C5, E5, and G5. The third is labeled 'VII' and consists of notes G4, B4, D5, and F5. The fourth is labeled 'VI' and consists of notes Bb4, D5, F5, and Ab5. Fingerings are indicated: for the first two chords, index (1) on A, middle (2) on C, ring (3) on E, and pinky (4) on G; for the third chord, index (1) on G, middle (2) on B, ring (3) on D, and pinky (4) on F; for the fourth chord, index (1) on Bb, middle (2) on D, ring (3) on F, and pinky (4) on Ab.

39.

590\_\*45/32\_F#m→G#

Musical notation for exercise 39, showing four measures. The first measure is labeled II, the second I, the third IX, and the fourth VIII. The notation includes treble clef, key signature of one sharp (F#), and various chord voicings with fingerings (1, 2, 3, 4) and accents.

40.

590c\_\*45/32\_Bb→E

Musical notation for exercise 40, showing four measures. The first measure is labeled I, the second I, the third I, and the fourth IV. The notation includes treble clef, key signature of two flats (Bb), and various chord voicings with fingerings (1, 2, 3, 4) and accents.

41.

610c\_\*64/45\_C#m→Eb

Musical notation for exercise 41, showing two measures. Both measures are labeled IV. The notation includes treble clef, key signature of one sharp (C#), and various chord voicings with fingerings (1, 2, 3, 4) and accents.

42.

773c\_\*25/16\_Bb→F#

Musical notation for exercise 42, showing six measures. The first measure is labeled I, the second II, the third I, the fourth II, the fifth III, and the sixth III. The notation includes treble clef, key signature of two flats (Bb), and various chord voicings with fingerings (1, 2, 3, 4) and accents.

43.

773c\_\*25/16\_F→C#

I I

44.

814c\_\*8/5\_F#→D

IV IV

45.

814c\_\*8/5\_F#→D

II II I I

46.

814c\_\*8/5\_D→Bb

I I

47.

814c\_\*8/5\_C#m→A

I II

4# 0

48.

884c\_\*5/3\_Am→D

II II

1 3 1 4

49.

884c\_\*5/3\_A→F#

II II

0 1

50.

925c\_\*125/75\_G#→F

I I

4 1

51.

996c\_\*16/9\_Am→Eb

Musical notation for exercise 51, showing two measures. The first measure is labeled 'III' and the second 'I'. The notation includes a treble clef, a 4/4 time signature, and a bass line with a 0. The notes are: Measure 1: Treble clef, notes G4, A4, B4, C5 (quarter notes), with a triplet '3' over the first three notes. Bass line: notes C3, E3, G3 (quarter notes). Measure 2: Treble clef, notes G4, A4, B4, C5 (quarter notes), with a triplet '3' over the first three notes. Bass line: notes F3, A3, C4 (quarter notes), with a triplet '3' over the first three notes and a '1' below the first note.

52.

996c\_\*16/9\_Gm→D

Musical notation for exercise 52, showing two measures. The first measure is labeled 'VI' and the second 'V'. The notation includes a treble clef, a 4/4 time signature, and a bass line with a 1. The notes are: Measure 1: Treble clef, notes G4, A4, B4, C5 (quarter notes), with a triplet '3' over the first three notes. Bass line: notes G3, B3, D4 (quarter notes), with a triplet '3' over the first three notes and a '1' below the first note. Measure 2: Treble clef, notes G4, A4, B4, C5 (quarter notes), with a triplet '3' over the first three notes. Bass line: notes G3, B3, D4 (quarter notes), with a triplet '3' over the first three notes and a '1' below the first note.

53.

996c\_\*16/9\_F→Eb

Musical notation for exercise 53, showing four measures, all labeled 'I'. The notation includes a treble clef, a 4/4 time signature, and a bass line with a 0. The notes are: Measure 1: Treble clef, notes F4, G4, A4, B4 (quarter notes), with a triplet '3' over the first three notes. Bass line: notes F3, A3, C4 (quarter notes), with a triplet '3' over the first three notes and a '0' below the first note. Measure 2: Treble clef, notes F4, G4, A4, B4 (quarter notes), with a triplet '3' over the first three notes. Bass line: notes F3, A3, C4 (quarter notes), with a triplet '3' over the first three notes and a '1' below the first note. Measure 3: Treble clef, notes F4, G4, A4, B4 (quarter notes), with a triplet '3' over the first three notes. Bass line: notes F3, A3, C4 (quarter notes), with a triplet '3' over the first three notes and a '1' below the first note. Measure 4: Treble clef, notes F4, G4, A4, B4 (quarter notes), with a triplet '3' over the first three notes. Bass line: notes F3, A3, C4 (quarter notes), with a triplet '3' over the first three notes and a '1' below the first note.

54.

1088c\_\*15/8\_Dm→A

Musical notation for exercise 54, showing six measures with labels I, II, VIII, II, III, II. The notation includes a treble clef, a 15/8 time signature, and a bass line with a 0. The notes are: Measure 1: Treble clef, notes D4, E4, F4, G4 (quarter notes), with a triplet '3' over the first three notes. Bass line: notes D3, F3, A3 (quarter notes), with a triplet '3' over the first three notes and a '0' below the first note. Measure 2: Treble clef, notes D4, E4, F4, G4 (quarter notes), with a triplet '3' over the first three notes. Bass line: notes D3, F3, A3 (quarter notes), with a triplet '3' over the first three notes and a '0' below the first note. Measure 3: Treble clef, notes D4, E4, F4, G4 (quarter notes), with a triplet '3' over the first three notes. Bass line: notes D3, F3, A3 (quarter notes), with a triplet '3' over the first three notes and a '0' below the first note. Measure 4: Treble clef, notes D4, E4, F4, G4 (quarter notes), with a triplet '3' over the first three notes. Bass line: notes D3, F3, A3 (quarter notes), with a triplet '3' over the first three notes and a '0' below the first note. Measure 5: Treble clef, notes D4, E4, F4, G4 (quarter notes), with a triplet '3' over the first three notes. Bass line: notes D3, F3, A3 (quarter notes), with a triplet '3' over the first three notes and a '0' below the first note. Measure 6: Treble clef, notes D4, E4, F4, G4 (quarter notes), with a triplet '3' over the first three notes. Bass line: notes D3, F3, A3 (quarter notes), with a triplet '3' over the first three notes and a '0' below the first note.

55.

275c\_\*75/64\_Gm→F#

The image shows a musical staff with a treble clef and a key signature of one sharp (F#). The staff is divided into four measures, each representing a different chord. Above the staff, the Roman numerals V, IV, III, and II are written above their respective measures. The notes and fingerings for each chord are as follows:

- Measure V:** Notes are G4 (3rd finger), B4 (4th finger), and D5 (open). Fingering: 3, 4, 0.
- Measure IV:** Notes are F#4 (3rd finger), A4 (4th finger), and C5 (1st finger). Fingering: 3, 4, 1.
- Measure III:** Notes are G4 (open), B4 (2nd finger), and D5 (1st finger). Fingering: 0, 2, 1.
- Measure II:** Notes are F#4 (2nd finger), A4 (4th finger), and C5 (1st finger). Fingering: 2, 4, 1.